




the catalogue

the finest catering equipment
& furniture for hire



INTRODUCTION



A WELL DRESSED TABLE IS EXCEPTIONAL

In turn we are dedicated to making your event exceptional to your guests. That is why we care so much about the smallest details of the crockery, cutlery, glassware and linen adorning your table.

Since 2002 Well Dressed Tables has custom delivered the finest items to discerning caterers and event managers throughout the UK and Europe. We follow trends and invest in high quality items from modern designs to traditional classics, in line with requests from clients. Our luxury items create stunning event environments, including some of Britain's top PLCs, blue chip companies, exclusive venues, event caterers, stately homes and secure premises.

Our service is about so much more than pristine products. Each client is assigned a dedicated account manager, who will take time to understand your event, your aspirations and help you get the best value from your budget.

This extends to an extensive range of in-house event furniture offered by sister company Spaceworks, along with an extensive range of kitchen equipment.

Our service goes from a simple hire to providing a single solution for all event hire needs. In addition to the wide range stocked by Well Dressed Tables and Spaceworks, as part of Arena Group our sister companies Arena Seating and Arena Structures can provide any additional products from marquees, temporary structures, event seating to ice rinks with the same trusted level of professional, friendly service.

FINE BONE CHINA & PORCELAIN

From the **finest bone china** to **high quality porcelain**, Well Dressed Tables has a wide range of crockery to suit every style, every event and every budget.

FOUGÈRE

Fougère fine bone china bespoke collection. Ivory with subtle ridges along the edge, and comes in a range of sizes with accessories to create the perfect place setting whether it be for a wedding, private banquet or business dinner. Specifically developed for the fine dining market, this bespoke range of china enhances a table reflecting a designer look.



Side Plate 15cm / 6in **WA7002**
 Buffet Plate 20cm / 9in **WA7004**
 Dinner Plate 25cm / 10in **WA7006**
 Presentation Plate 30cm / 12in **WA7008**



Oatmeal Bowl 21cm / 8in **WA7010**



Soup Cup 30cl / 10oz **WA7014**
 Soup cup Saucer 15.7cm / 6.25in **WA7016**



Tea Cup 20cl / 7oz **WA7022**
 Tea Saucer 15.7cm / 6.25in **WA7024**



Coffee Cup
 (Demi Tasse) 10cl / 3.5oz **WA7026**
 Coffee Saucer
 (Demi Tasse) 14cm / 5.5in **WA7028**



Tea Pot 1.1ltr / 40oz **WA7030**
 Coffee Pot 1.5ltr / 55oz **WA7032**



Fougère Cream Jug 36cl / 12oz **WA7040**



Fougère Sugar Bowl 24cl / 8oz **WA7042**



Salt Pot **WA7036**
 Pepper Pot **WA7037**



Fougère Butter Plate 10cm / 4in **WA7034**



FOUGÈRE
FINE BONE CHINA

REGENCY

The Regency collection is ideal for those extra-special events. The silver rimmed plates come in a variety of sizes and with a mixture of accessories perfect for a wedding place setting, gala dinner or afternoon tea.



Side Plate 16cm / 6in **WB8100**
 Sweet Plate 23cm / 9in **WB8102**
 Dinner Plate 25cm / 10in **WB8104**



Dessert Bowl 16cm / 6.5in **WB8110**
 Oatmeal Bowl 19cm / 7.5in **WB8108**



Sauce Boat 45cl / 16oz **WB8124**



Coffee Cup (Demi Tasse) 10cl / 3.5oz.. **WB8115**
 Coffee Saucer 10cl / 3.5oz..... **WB8117**
 Tea Cup 21cl / 7.5oz..... **WB8112**
 Tea Saucer 15cm / 6in **WB8114**



Cream Jug 24cl/8.5oz..... **WB8116**
 Sugar Bowl 36cl / 12.5oz..... **WB8118**



Tea Pot 1.1ltr / 40oz..... **WB8120**
 Coffee Pot 1.5ltr / 55oz..... **WB8122**

ROYAL WINDSOR

A New Collection added to the ever popular Fine Bone China Range. Royal Windsor is a clean and modern collection of tableware in a soft creamy white. With a very flat appearance, the range is smart & sophisticated, and offers the best from Well Dressed Tables.



Side Plate 20cm / 9in **WA8002**
 Dinner Plate 28cm / 11in..... **WA8006**
 Charger Plate 31cm / 12in..... **WA8008**



Demi Coffee Cup 110ml..... **WA8026**
 Demi Coffee Saucer **WA8028**
 Tea Cup 220ml..... **WA8022**
 Tea Saucer..... **WA8024**



Sugar Bowl..... **WA8038**



Creamer 140ml..... **WA8034**



Pepper Pot..... **WA8036**
 Salt Pot **WA8037**



LUBIANA

A high quality range of porcelain, the Lubiana range is classic, yet modern. Crisp white and available in a variety of sized plates along with matching accessories. The perfect place setting for any event.



Side Plate 15cm / 6in **WA3002**
 Buffet Plate 23cm / 9in **WA3006**
 Dinner Plate 25.5cm / 10.5in **WA3008**
 Presentation Plate 30cm / 12in **WA3010**



Triangle Plate 30cm / 12in **WA3009**



Sauce Boat 15oz **WA4040**



Oatmeal Bowl 17cm **WA3014**
 Fruit Bowl 13cm **WA3013**



Soup Cup 30cl / 10oz **WA3015**
 Soup Saucer 15.2cm / 6in **WA3016**



Coffee Cup (Demi Tasse) 100ml / 13.5oz **WA3026**
 Coffee Saucer (Demi Tasse) 12.7cm / 5in.. **WA3028**
 Tea Cup 20cl / 7oz **WA3022**
 Tea Saucer 12.7cm / 5in **WA3024**



Round 10-cup Coffee Pot 35oz **WA3030**
 Round 10-cup Tea Pot 37oz **WA3032**



Milk/Cream Jug 30cl / 10oz **WA3034**
 Classic Sauce Jug 30cl **WA3035**
 1 Pint Milk Jug 1 pint **WA3060**



Sugar Bowl 20cl / 7oz **WA3038**



Butter Plate 9cm / 3.5in **WA4026**
 Mustard Pot 7.5cm / 3in **WA4037**



Sauce Boat 15oz **WA4040**
 Salt & Pepper Split Dish 8cm / 3in **WA4024**
 Salt Pot **WA4048**
 Pepper Pot **WA4049**



LISSE

A contemporary collection of white porcelain plates to perfectly complement our Lubiana range. It's rimless appeal offers a simple and functional design.



Plate 16cm / 6in..... **WF6002**
 Plate 22.5cm / 9in..... **WF6004**
 Plate 28cm / 10in..... **WF6006**
 Plate 30cm / 12in..... **WF6008**



Oatmeal Bowl 20cm/ 8in..... **WF6010**



Triangle Plate 29cm / 11.5in..... **WF7150**

ORION

A plain white collection with wide rims and smooth rounded edges. A classic choice for business lunches and more casual parties and events.



Plate 15cm / 6in side plate..... **WF4444**
 Plate 22.5cm / 9in..... **WF4406**
 Plate 25cm / 10in..... **WF4408**



Square Plate 15cm / 6in **WF4402**
 Square Plate 20cm **WF4404**



Stacking Cup 300ml / 12oz..... **WF4422**
 Stacking Cup Saucer 15.2cm / 6in.... **WF4424**



Butter Plate 7.5cm / 3in..... **WF4426**
 Sugar Bowl 300ml / 10oz..... **WF4438**



Cream Jug 200ml / 8oz..... **WF4434**



Salt Pot..... **WF4448**
 Pepper Pot..... **WF4449**

HOT BEVERAGE SERVICE

A selection of practical, contemporary, modern and stylish pieces to serve up your hot drinks.



Orion Latte Mug 245ml **WA4021**



Plain White Coffee Mug 330ml **WA4022**



Mug White - Farnborough **WA4023**



Cappuccino Cup 9oz / 250ml **WA4120**
Cappuccino Saucer **WA4121**



Can Tea / Coffee Cup 200ml **WA1635**
Can Tea / Coffee Saucer 12.7cm ... **WA1636**



Can Tea / Coffee Saucer 12.7cm **WA1636**



Black Demi Tasse Mug
6cm (dia) x 7cm **WB2815**



Stackable 2-Cup tea Pot 20oz **WF4442**



Awe Cup 130ml **WF5124**
Awe Saucer **WF5126**



Cappuccino Glass Mug
340ml / 12oz **WA4019**



Latte Glass 14oz / 400ml **WA4027**



RESERVÉ RANGE

A range of Stoneware with various sizes and colour options. A sleek and more contemporary look can be created by mixing and matching different shapes and colours.



Black Presentation Plate 30.5cm **WB2964**
Black Round Plate 27.5cm **WB2965**



Valle Black Square Plate
26cm x 26cm **WF5109**
Valle Black Square Plate
12cm x 12cm **WF5137**



Black Salad Plate 27.5cm **WB2967**



White Presentation Plate 30.5cm **WB2958**
White Presentation Plate 27.5cm **WB2959**



Valle White Square Plate
26cm x 26cm **WF5138**
Valle White Square Plate
12cm x 12cm **WF5135**



White Salad Plate 27.5cm **WB2961**



Valle Brown Rectangle 25cm x 15cm **WF5136**



Valle Black Rectangle 25cm x 15cm ..**WF5125**



Valle White Rectangle 25cm x 15cm . **WC5126**



Salad Bowl Black
22cm x 22cm x 9cm **WB2775**
Salad Bowl Black
17.5cm x 17.5cm x 5cm **WB2776**



Valle Grey Rectangle Plate
30cm x 15cm **WF5013**
30cm x 20cm **WF5131**



Valle Chocolate Rectangle Plate
25cm x 15cm **WF5133**

KENIA

Quirky but still simple, yet elegant. Our Kenia collection is the latest trend in square round plates. A stylish square collection of plates with round centre.



Square Plate 26cm **WP2012**



Square Plate 20cm **WP2010**



Small Square Plate 7cm x 7cm **WB4129**
Small Square Plate 9cm x 9cm **WB4128**

SQUARE & RECTANGLE PLATES



Square Plate 11cm / 4.5in **WF4002**
Square Plate 18cm / 7in **WF4004**
Square Plate 26cm / 10in **WF4006**
Square Plate 30cm / 12in **WF4008**



White Rectangle Plate
27cm x 13cm **WF5118**
White Rectangle Plate
36cm x 17cm **WF5120**

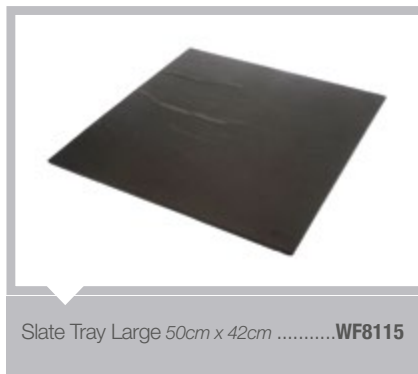


Oblong Plate 26cm x 11cm **WF4012**

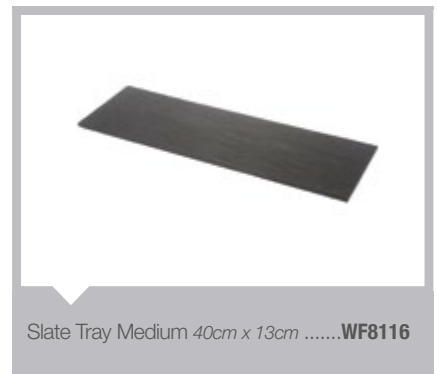
SLATE PLATES & PLATTERS



Slate Small Square 7cm x 7cm **WB2587**



Slate Tray Large 50cm x 42cm **WF8115**



Slate Tray Medium 40cm x 13cm **WF8116**



Slate Tray Medium 40cm x 8cm **WF8117**



Slate Plate Large 26cm x 13cm **WB1006**



Slate Plate 25cm x 12cm **WF5123**

BOWLS

Providing a more stylish edge to your bowl food and canapé style events, we have a vast range of quirky mini dishes and bowls which are sure to impress your guests.



Rice Bowl White 10cm / 4in**WF1195**
 Rice Bowl Black 10cm / 4in**WF1192**
 Rice Bowl Brown/Cream 10cm / 4in.....**WF1196**



Noodle / Rice Bowl 11.5cm / 4.5in**WF1194**



Blue Crackle Bowl 12.5cm / 5in**WF7124**
 Cream Crackle Bowl 12.5cm / 5in.....**WF7128**
 Green Crackle Bowl 12.5cm / 5in.....**WF7126**



Sugar/Tasting Bowl 10cm / 4in**WF1164**



Valle Oval Bowl
 12cm x 10cm x 4cm.....**WF5139**



Valle Square Bowl
 12cm x 12cm x 5cm.....**WF5140**



Fuji Dappled Bowl 6in..... **CT4000**



Terracotta Bowl 12.5cm / 5in **WB2779**



Valle Winged Bowl
 22cl / 18cm x 13cm x 10cm**WF1198**



Spoulet Bowl White
 10.5cm 4in**WF1193**



Buffet Plate 21cm x 12cm x 2.5cm **WB1791**



ACCESSORIES

Inspiring dishes, plates and mini pieces for serving delicate canapés and mouth-watering bowl food. Perfect for standing receptions and buffet style events.



Awe S/S Mini Wok
8cm (10cm diameter) **WF5134**



Saucepan S/S 7cm / 2.75in **WD1953**



Saucepan S/S with Lid
10cm / 4in **WD1955**



Balti Dish 15cm / 6in **WD1716**



China Cone with metal stand
6cm x 11cm Small **WB4239**
8cm x 13cm Medium **WB4237**
13cm x 21cm Large **WB4235**



Valle Tagine White Dish 6cm **WF5143**
Valle Tagine White Dish 12cm **WF5148**



Awe White Teardrop
Canapé Spoon **WF5128**
Awe Black Teardrop
Canapé Spoon **WF5129**



Chinese Spoon White **WF7120**
Awe Clear Glass Canapé Spoon **WF5127**



Ramekin Ribbed 3.5 in/9cm **WF4039**
Ramekin 3.75 in/9.5 cm **WF4038**



Casserole Pot
Beige 8cm x 5.5cm x 5.5cm **WB9015**



Black & Red Ramekin
7.5cm x 4cm **WB9014**



Beige Ramekin
7.5cm x 4cm **WB9013**

SPECIALIST PORCELAIN

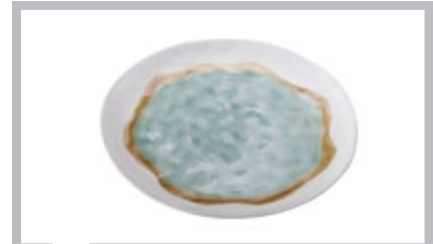
Adding a stylish and more creative touch to your food presentation. This range includes a selection of crackle effect plates, earthy and neutral shades to enhance your table settings.



Brown / Blue Plate 16.6cm **WF5019**
Brown / Blue Plate 30cm **WF5018**



Natural Swirl Plate 28.5cm **WF5016**



White / Blue Crackle Plate 28cm **WF5019**



Onde Presentation Plate 31cm **WF5012**



Ebony Plate 21cm **WF5020**



SAHARA RANGE

A selection of crisp porcelain plates in a variety of sizes with snazzy coloured and glittered rims. Designed to add a touch of glitz and colour.



Sahara Silver Plate 28.5cm **WB254**
Sahara Silver Plate 22cm **WB255**
Sahara Silver Plate 16cm **wB256**



Globe Turquoise Presentation Plate
32.5cm **WB262**



Globe Blue Presentation Plate
32.5cm **WB261**



Globe Pink Presentation Plate
32.5cm **WB2630**

TASTING BOWLS & PASTA PLATES

From classic to contemporary and modern, our selection of tasting bowls and pasta plates offer a wide choice to choose from. Durable, light, stylish yet practical designs.



Valle Wave Oval Plate 30cm / 25cm ...**WF5142**



Valle Pasta Bowl 27cm (oval)**WF5144**



Valle Risotto Bowl.....**WF5141**



Risotto Bowl 25cm / 10in**WF1135**



Bowl Plate 11in.....**WF1197**



Bordeux Risotto Plate 15cm..... **WB2573**



Black Oval Plate
24cm x 35.5cm / 9.5in x 14in**WF5108**
White Oval Plate
24cm x 35.5cm / 9.5in x 14in**WF5106**



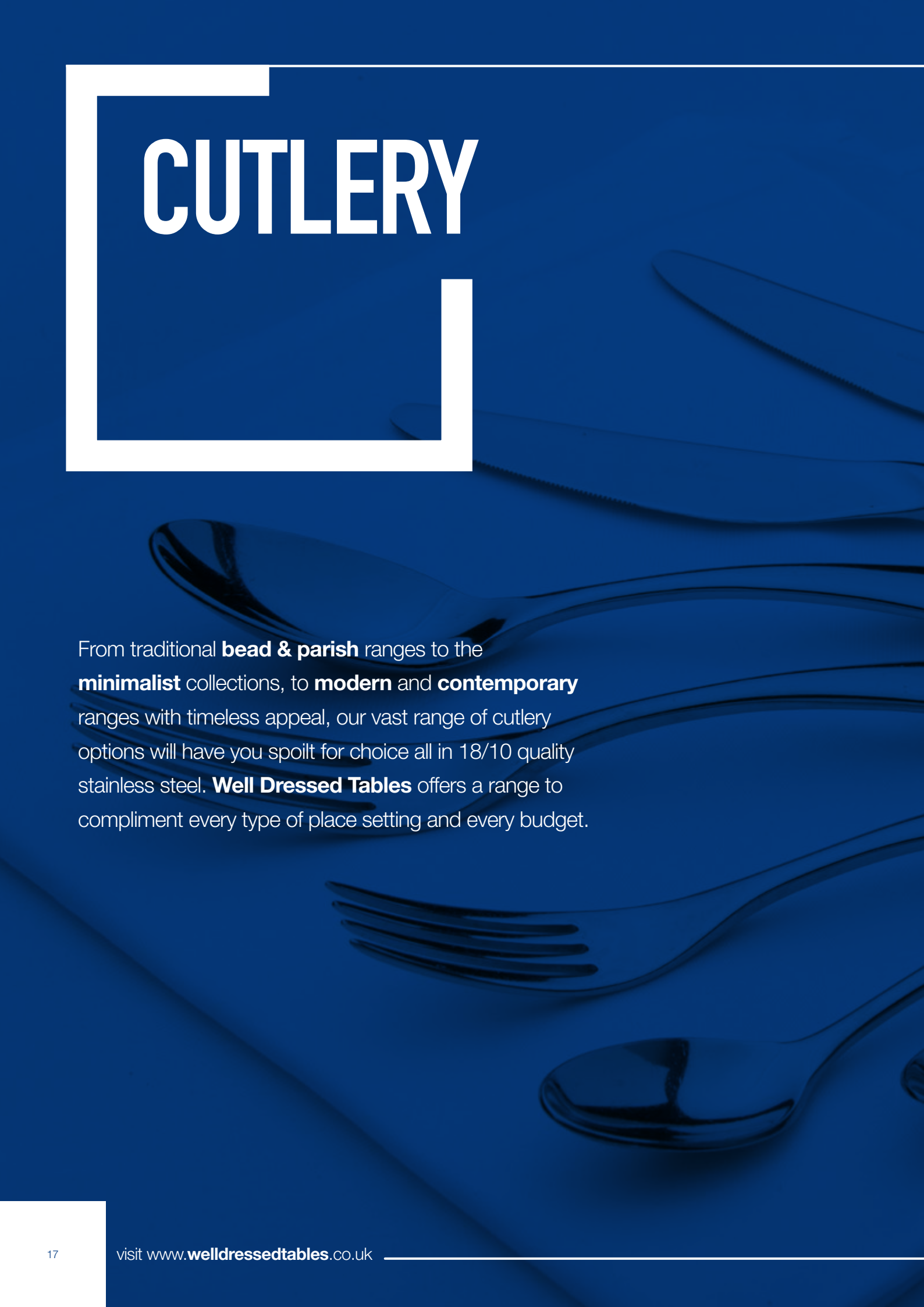
Small Square Flat Plate
7cm x 7cm / 2.75in x 2.75in**WF5116**
Small Round Bowl 7cm / 2oz.....**WF5110**
Small Oval Dish 7cm / 1oz.....**WF5112**



Evolve Plate 16.5cm.....**WF1199**



CUTLERY



From traditional **bead & parish** ranges to the **minimalist** collections, to **modern** and **contemporary** ranges with timeless appeal, our vast range of cutlery options will have you spoilt for choice all in 18/10 quality stainless steel. **Well Dressed Tables** offers a range to compliment every type of place setting and every budget.

WEDGEWOOD ELLIPSE



Dinner Knife	WB1506
Dinner Fork	WB1510
Soup Spoon	WB1512
Dessert Knife	WB1502
Dessert Fork	WB1504
Dessert Spoon.....	WB1508
Demi Tasse Spoons.....	WB1514
Mini Fork	WB1516
Tea Spoon	WB1518



WEDGEWOOD FULCRUM



Dinner Knife	WB1706
Dinner Fork	WB1710
Soup Spoon	WB1712
Dessert Knife	WB1702
Dessert Fork	WB1704
Dessert Spoon.....	WB1708
Mini Meal Fork	WB1716
Tea Spoon	WB1718
Steak Knife.....	WB1720



WEDGEWOOD REFLECTIONS



Main Course Knife	WB3308
Main Course Fork	WB3310
Soup Spoons	WB3302
Dessert Knife	WB3312
Dessert / Starter Fork	WB3314
Dessert Spoon.....	WB3316
Service Spoon	WB3318
Tea Spoon	WB3322
Coffee Spoon	WB3324



KENIA



Dinner Knife	WB4608
Dinner Fork	WB4610
Soup Spoon	WB4602
Dessert Fork	WB4614
Dessert Knife	WB4612
Dessert Spoon.....	WB4616
Tea Spoon	WB4622
Coffee Spoon	WB4624
Fruit Fork.....	WB4626
Steak Knife.....	WB4628
Serving Fork.....	WB4630
Serving Spoon	WB4632
Cake Slice small.....	WB4634
Cake Slice large.....	WB4636



MESSINA



Dinner Knife	WB1904
Dinner Fork	WB1906
Soup Spoon	WB1902
Starter/Dessert Knife	WB1908
Starter/Dessert Fork	WB1910
Dessert Spoon.....	WB1922
Tea Spoon	WB1912
Coffee Spoon	WB1914
Steak Knife.....	WB1916
Serving Spoon	WB1918
Serving Fork.....	WB1920



MADRID



Dinner Knife	WB4508
Dinner/Service Fork	WB4510
Dessert/Soup Spoon.....	WB4516
Dessert/Side Knife	WB4512
Dessert Fork	WB4514
Service Spoon	WB4518
Coffee Spoon	WB4524
Tea Spoon	WB4522



PIPE



Main Course Knife	WB3108
Main Course Fork / Service Fork.....	WB3110
Soup Spoons	WB3102
Dessert / Starter Knife	WB3112
Dessert / Starter Fork	WB3114
Dessert Spoon.....	WB3116
Service Spoon	WB3118
Tea Spoon	WB3122
Coffee Spoon	WB3124



GLACIER



Main Course Knife	WB3008
Main Course Fork.....	WB3010
Soup Spoons	WB3002
Dessert /Starter Knife	WB3012
Dessert/Starter Fork	WB3014
Dessert Spoon.....	WB3016
Service Spoon	WB3018
Tea Spoon	WB3022
Coffee Spoon	WB3024
Large Serving Spoon S/S.....	WB2026
Large Serving Fork S/S	WB2028



LINEAR



Main Course Fork	WB1204
Main Course Knife	WB1202
Soup Spoons	WB1212
Dessert Spoon.....	WB12010
Dessert /Starter Knife	WB1206
Dessert/Starter Fork	WB1208
Tea Spoon	WB1216
Coffee Spoon	WB1214



HARLEY



Dinner Knife	WB3208
Dinner Fork	WB3210
Soup Spoon	WB3202
Dessert Knife	WB3212
Dessert Fork	WB3214
Dessert Spoon.....	WB3216
Service Spoon	WB3218
Tea Spoon	WB3222
Coffee Spoon	WB3224
Pastry Fork.....	WB3226



JESMOND



Dinner Knife	WB1308
Dinner Knife	WB1309
Dinner/Service Fork	WB1310
Fish Knife	WB1304
Fish Fork	WB1306
Soup Spoon	WB1302
Dessert/Side Knife	WB1312
Dessert Knife	WB1313
Dessert Fork	WB1314
Dessert Spoon.....	WB1316
Service Spoon	WB1318
Tea Spoon	WB1322
Coffee Spoon	WB1324



ACCESSORIES



Cake Fork Bead.....	WB1360
Cake Fork Plain.....	WB3260
Cake Fork S/S Monteverdi	WB3262
Cake Fork S/S Mascagni.....	WB3264
Cake Fork S/S Elipse.....	WB1516
Cake Fork S/S	WB4626
Wedding Cake Knife.....	WB1536
Sauce Ladle Kings EPNS	WB1540



GLASSWARE & BAR EQUIPMENT

From **classic** and **modern** to **crystal collections**, Well Dressed Tables offers a wide range of stylish **stemware**, **bar glassware** and **quirky coloured glasses** to perfectly compliment your place settings, bars and drinks receptions, along with service accessories.

STEMWARE

From curvy to classic and simple to elegant, our stemware range offers a design to suit every budget and every event. From weddings, to parties, fine dining and corporate events, you'll be sure to find something that perfectly complements your place settings and fine wines.



ESTELLE

Riesling 8.4oz 250ml **WC1702**
 Chardonnay 10.7oz 318ml **WC1701**
 Bordeaux 14.5oz 428ml **WC1704**
 Champagne 8.4oz 250ml **WC1703**



INVITATION

Wine Goblet 15oz (44cl) **WC9000**
 Wine Goblet 36cl / 12oz (35cl) **WC9001**
 Wine Goblet 8.5oz (25cl) **WC9002**
 Champagne Flute 6oz (18cl) **WC9003**



CUVEE

Wine Glass 23oz **WC1830**
 Wine Glass 18oz **WC1832**
 Wine Glass 112.7oz **WC1834**
 Champagne Flute 7oz **WC1836**



DARTINGTON

Large Wine Goblet (63cl / 21oz) **WC5000**
 Medium Wine Goblet (48cl / 16oz) **WC5002**
 Small Wine Goblet (36cl/36cl/12oz) ... **WC5004**
 Champagne Flute (18cl / 6oz) **WC5006**



RESERVA

Champagne Flute 16cl **WC1814**
 Wine Glass 20.5oz **WC1816**
 Wine Glass 16.5oz **WC1818**
 Wine Glass 12.5oz **WC1820**
 Wine Glass 8.5oz **WC1822**



CANALETTO

Old Fashioned 12oz **WC5014**
 Wine Goblet 9.5oz **WC5010**
 Wine Goblet 14oz **WC5008**
 Champagne Flute 7oz **WC5012**



BLACK STEM

Goblet (8oz) **WC3606**
 Goblet (36cl / 12oz) **WC3610**
 Champagne Flute (6oz) **WC3612**



SIGNATURE

Goblet (19cl / 6.25oz) **WC3504**
 Goblet (25cl / 8.25oz) **WC3506**
 Goblet (36cl / 36cl / 12oz) **WC3510**
 Champagne Flute (17cl / 5.75oz) **WC3512**



PERCEPTION

Goblet (8oz) **WC3106**
 Goblet (36cl / 12oz) **WC3108**
 Goblet (14oz) **WC3110**
 Champagne Flute (6oz) **WC3112**



CHARME

Large Wine Glass 30cl **WC3432**
 Small Wine Glass 24cl **WC3431**



SAVOIE

Wine Glass 6oz **WC1104**
 Wine Glass 8oz **WC1106**
 Wine Glass 12oz **WC1110**
 Champagne Flute 7oz **WC1112**



BAR

Mix up a delight in one of our quirky shaped glasses or go for an option that is simple, yet functional. Glassware for every thirst.



HEAVY BASED V
Small (4oz) **WC1972**
Medium (6oz) **WC1974**
Large (36cl / 12oz) **WC1975**



LUNA
Hi Balls 36cl / 12oz **WC1850**
Old Fashion 36cl / 12oz **WC1852**



HI BALLS
(5oz) **WC3544**
(8oz) **WC1934**
(10oz) **WC3542**
(12oz) **WC3538**
(20oz) **WC3540**



CUT CRYSTAL
Slim Jim 12oz **WC6112**



BEER GLASSES
Beer Glass 1pt **WC1942**
Beer Mug 1/2pt **WC1943**



Whisky Tumbler 296ml / 10oz **WC1924**

SHOT & DESSERT



Islande 1oz **WC1907**
Shot Glass 7cl **WC1970**
Hot Shot 1oz **WC1909**
Whisky 1oz **WC1968**



HELSINKI
Dessert Glass 26cl **WC1926**
Shot Glass 7cl **WC1970**



Slanted Shot Glass 50ml / 1.75oz ... **WC1911**



SquareShot Glass 60ml / 2oz **WC1971**



London Shot 30ml / 1oz **WC1927**



COCKTAIL



COCKTAIL GLASSES

Cocktail Sling Glass 36cl / 12oz **WC1947**
 Champagne Saucer 118ml (4oz) **WC1930**
 Champagne Saucer 340ml / 12oz **WC1946**

MARTINI GLASSES

15cl / 5oz **WC1948**
 36cl / 12oz **WC1984**



MARTINI CURVED

11.6oz 343ml **WC1705**



DOUBLE WALLED

Double Walled Tasting Dish 5.25oz **WA3079**
 Double Walled Shot Glass 7cl **WC1910**
 Double Walled Latte Glass 40cl **WA3081**



BRANDY GLASS

370ml / 13oz **WC1912**
 230ml / 8oz **WC1914**
 145ml / 5oz **WC1916**



COLOURED

Create your own colour scheme with our mix of striking coloured stemware, tumblers and shot glasses. Or even mix up a quirky cocktail, starter or dessert with our coloured Cubix range.



CUBIX CUBE

Clear 7.5cm / 3in **WC1334**
 Black 7.5cm / 3in **WC1336**
 Red 7.5cm / 3in **WC1338**
 Blue 7.5cm / 3in **WC1340**
 Margarita Glass Bowl 27cl / 7oz **WC1334**
 Martini Glass Bowl 21cl / 7oz **WC1346**



GLOBE ROCK GLASS

Red 11oz **WX1907**
 Yellow 11oz **WX1908**
 Lilac 11oz **WX1909**
 Orange 11oz **WX1910**
 Black 11oz **WX1911**
 Blue 11oz **WX1912**



OLD FASHIONED

Red 35cl / 12.25oz **WC3414**
 Black 35cl / 12.25oz **WC3415**



Misket G&T Glass Clear 625ml / 22oz **WC3416**
 Misket G&T Glass Pink 625ml / 22oz **WC3417**
 Misket G&T Glass Green 625ml / 22oz **WC3418**



NEO WATER GLASSES

Blue **WC3408**
 Red **WC3410**
 Black **WC3440**



MOYO SHOT GLASS

Clear 4cl / 1 1/4 oz **WC1902**
 Black 4cl / 1 1/4 oz **WC1904**
 Yellow 4cl / 1 1/4 oz **WC1905**
 Green 4cl / 1 1/4 oz **WC1906**

JUGS & CARAFES

A selection of service jugs, perfect for juices, cocktails, pimm's and wine.



Juice Carafe 1ltr **WP43824**
Carafe 1ltr **WC1964**



Water Jug 1ltr **WC1950**



Conic Glass Jug 1.8ltr **WC1954**



BUBBLE JUG
Clear 1.5ltr **WC1985**
Red 1.5ltr **WC1987**
Blue 1.5ltr **WC1988**
Green 1.5ltr **WC1989**



PITCHER WATER JUG
Short 1.5ltr / 60oz **WC1978**



WATER JUG
Tall & Slender 1.5ltr **WC1976**



ACCESSORIES

Serviceware options which include our popular champagne tower, service trays, wine buckets and more.
We have your bar covered!



S/S Waiters Tray 36cm/14in **WD1534**
S/S Waiters Tray 41cm/16in **WD1536**



Black Round non-slip Tray
36cm/14in **WH1185**
Black Round non-slip Tray
41cm/16in **WF5010**



Cambro Rectangular Tray
34cm x 48cm / 13in x 19in **WH1180**



Black Oval Tray 60cm/24in **WH1190**
Kick Stand **WH1183**



Wine Bucket S/S
19(d) x 19(h) cms / 7.5(d) x 7.5(h) in **WD1962**



Ice Tongs 15cm / 6in **WF1502**



Bottle Skip with Wheels
62x97x36cm / 24x38x14in **WH1322**



Cooling Box
40x60x40cm / 16x23x16in **WX0184**



Rubber Matting
183x122cm / 60x48in / 5ft x 3ft **WH1202**



Waiters Friend **WF1504**



SHOT GLASS HOLDER
Clear **WC1330**
Frosted **WC1322**



Champagne Tower **WC1366**

BUFFETWARE

A collection of plain white china which is **durable**, yet **stylish, modern** and **practical**. Mixed with a selection of chafing dishes and accessories which are **clean, functional**, simple to use and easy to maintain. To serve and display, we have an ever growing range of **perspex shelving** and quirky **service trays**.

PLATTERS

A selection of pure white china in stylish, modern and contemporary designs. Perfect for buffet use and canapé service.



Oval Platter
42cm x 30cm **WB4137**



Valle Oblong Wave Tray
39cm x 25cm **WF8113**



Valle Oblong Ripple Tray
41cm x 25cm **WF8114**



White China Sushi Platter
38cm x 38cm / 15in x 15in **WA3074**



White China Square Platter
40cm x 40cm / 16in x 16in **WA3080**



Valle Rectangle White
39cm x 25cm **WB1841**
Valle Rectangle Black
39cm x 25cm **WB1827**



Nippon Almost Square White China Plate
43cm x 40cm / 17in x 17.5in **WF1130**



Nippon Round White China Platter
40cm / 16in **WF1128**



Valle White Rectangle Platter
40cm x 21cm **WF5145**



Habanna White Rectangle Platter
39.5cm x 24.5cm **WB1367**



Wave Buffet Dish
Medium **WA3092**



Curved Wave Buffet Dish
Curved **WA3094**

BUFFET BOWLS

A range of quirky and classic bowls. From quirky squares and funky shapes to traditional rounds and salad bowls. Add some fun to your buffet stations.



White China Square Bowl
33cm / 14.5in **WA3073**



Quad Bowl
25cm x 25cm **WF5150**



Square Dish
14cm / 5.5in **WF4024**



Valle Vintage Bowl
40cm x 27cm x 10cm **WF8110**



White China almost square bowl **WA3082**



Valle Handle Bowl
43cm x 24cm x 10cm **WF8112**



Saturn White China Round Bowl
42cm / 16.5in **WF1132**



Saturn White China Oval Bowl
40cm / 16in **WF1134**



White China Salad Bowl
40cm / 16in **WA3072**



Porcelain Round Chafing Dish Insert
..... **WD1771**



White Salad Bowl
23cm / 9in **WD1035**



Sole Dish
35cm x 5cm **WA3075**

CHAFING DISHES & ACCESSORIES

Clean, functional, simple to use and easy to maintain, choose between our oblong and oval chafing dishes and then choose which style of insert you would like.



Jazz Roll Top Chafing Dish..... **WD1781**



Chafing Dish Oblong Maestro
Full size 1/1 gastromne **WD1778**



Chafing Dish Round Flamenco
Full Size 1/1 gastromne **WD1780**



Chafing Dish Oval..... **WD1776**



Chafing Dish Oblong S/S 56cm **WD1766**



Electric Element for Chafing Dishes..... **WJ1323**
Chafing Dish Fuel **D-Fuel**



Chafing Insert Oblong
Full Size **WD1772**



Chafing Insert Oblong
Half size **WD1774**



Oval Vegetable Dish Lid S/S
20cm / 8in **WD1732**
25cm / 10in **WD1734**
30cm / 12in **WD1736**
50cm / 20in **WD1722**



Oval Vegetable Dish S/S
20cm / 8in **WD1700**
25cm / 10in **WD1702**
30cm / 12in **WD1704**
50cm / 20in **WD1710**



Oval Divided Vegetable Dish S/S
30cm / 12in **WD1746**
35cm / 14in **WD1744**
50cm / 20in **WD1742**



Oval Flate Tray 46cm / 18in **WD1510**
Oval Flate Tray 50cm / 20in **WD1512**

DISPLAY

Practical yet playful, our Perspex collection can be used as trays, tiered into shelves or even try out our shot glass holders and mini wok holders. Creating a fun way to display your tasty treats and offer a selfserve element with our champagne tower.



Perspex Tray Single Tier Clear
4cm(h) x 54cm(w) x 22cm(d)..... **WC1351**



Perspex Tray Single Tier Black
4cm(h) x 54cm(w) x 22cm(d)..... **WC1355**



Perspex Tray 2 Tier Clear
28cm(h) x 54cm(w) x 22cm(d)..... **WC1352**



Perspex Tray 2 Tier Black
28cm(h) x 54cm(w) x 22cm(d)..... **WC1356**



Perspex Tray 3 Tier Clear
52cm(h) x 54cm(w) x 22cm(d)..... **WC1353**



Perspex Tray 3 Tier Black
52cm(h) x 54cm(w) x 22cm(d)..... **WC1357**



Champagne Tower..... **WC1366**



Shot Glass Holders
Clear **WC1330**
Frosted **WC1332**



Awe Mini Wok Holder **WF5132**



Buffet Units
2 Tier **BUFFET 1**
Single Tier..... **BUFFET 2**



SPECIALITY PLATES

Beautiful coloured **glass Canapé plates** to make your canapés look even more tempting. More stunning coloured **charger plates** to help add that special finishing touch to your table settings. Alternatively keep it simple and classic with a clear glass plate or for a tiny bit of detail, choose from our **beaded glass plates** and more.

COLOURED PLATTERS

Add some colour and texture to your canapé service with our selection of coloured braid plates, glitter platters, and other quirky designs and colours.



Glass Braid Canapé Plate Silver
33cm / 13in **WF1174**



Glass Braid Canapé Plate Green
33cm / 13in **WF1178**



Glass Braid Canapé Plate Red
33cm / 13in **WF1176**



Blue Platter 33.5cm / 13.2in **WF1148**



Lime Green Platter 33.5cm / 13.2in **WF1149**



Orange Platter 33.5cm / 13.2in **WF1141**



Black Glitter Canapé Platter
39cm / 15.5in **WF1184**



Helix Blue Canapé Platter
39cm / 15.5in **WF1145**



Purple Aria Plate
39cm / 15.5in **WF2050**



LED Canapé Tray
39cm / 15.4in **HS055**



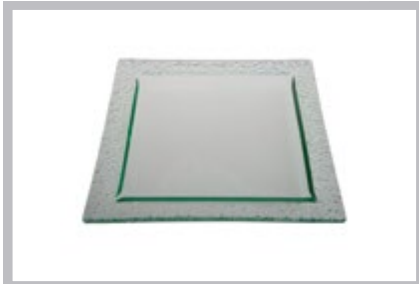
Cashmere Canapé Platter
31cm / 12in **WF1186**



Aster Canapé Platter
33.5cm / 13.2in **WF1147**

CLEAR PLATES

Keep it simple or add a twist of detail with our clear glass plates.



Square Glass Plate
27.5cm x 27.5cm / 11in.....**WF1190**



Rectangle Glass Plate
27.5cm x 15cm / 11 x 6in.....**WF1188**



Clear Plate
31cm / 12.25in**WF2060**



Glass Plate with Gold Rim
31cm / 12.25in**WF2026**



Gold Beaded Glass Plate
31cm/12.5in.....**WF1051**



White Frosted Plate
31cm / 12.25in**WF2046**



Clear/Frosted Edge Pasta Bowl
30cm /12in.....**WF3002**



Spiral Clear Plate
32cm /13in.....**WF2020**



Flower Clear Plate
34cm /13.5in.....**WF2016**



Toscana Glass Bowls
Small 8cm Sq.....**WJ2072**
Glass Bowl 10cm Sq.....**WJ2075**
Medium 14cm Sq**WJ2073**
Glass Bowl 20cm Sq.....**WJ2074**



Glass Square Plate
9cm x 9cm x 2.5cm**WF3151**
Glass Bowl Round 10cm**WJ2076**



Double Walled Tasting Dish 5.25oz.....**WA3079**

COLOURED PLATES

Brighten up your table settings with our coloured glass plates and bowls.



Cobalt Blue Plate
28cm / 11in.....**WF2002**
31cm.....**WF2004**



Cobalt Blue - Square Plate
31cm x 31cm.....**WF2038**



Cobalt Blue - Pasta Bowl
31cm.....**WF3004**



Black Round Plate
30cm / 12in.....**WF2036**



Black Square Plate
31cm x 31cm.....**WF2034**



Black Pasta Bowl
20cm.....**WF3006**



Emerald Green Plate
28cm / 11in.....**WF2008**
31cm.....**WF2010**



White Frosted Plate
31cm.....**WF2046**



Toscana Plate
34cm / 12.5in.....**WF2070**



Glass Braid Charger Gold Plate
31cm / 12in.....**WF2012**



Glass Braid Charger Silver Plate
31cm / 12in.....**WF2013**



Amber Plate
32cm.....**WF2014**

TABLE ACCESSORIES

From stunning **silverware** to **candelabras** and **table number stands**, we have something to really complete your table settings. Gorgeous **silver wedding cake stands** and **cake slices** and **tiered glass cake stands** for you to serve up something delicious in style.

SILVERWARE

The silverware that makes an event sparkle. From beautiful weddings, to glamorous parties and corporate events, there is something in this range to suit all tastes.



Butlers Tray Oblong EPNS
43cm x 56cm **WB1552**



Round Tray EPNS 30cm / 12in **WC1545**
Round Tray EPNS 41cm / 16in **WC1546**



Silver Fruit Bowl **WA2810**



Cream Jug
10oz **WA2802**



Sugar Bowl EPNS **WA2800**



Silver Sugar Tongs **WA2806**



Wedding Cake Stand Round
14in diameter **WB1530**



Wedding Cake Stand Square
14in diameter **WB1532**



Wedding Cake Knife **WB1536**



Salt & Pepper Mill EPNS
Salt (6cm) **WB1550**
Pepper (6cm) **WB1548**



Light House Salt & Pepper Cruet
Salt **WB1542**
Pepper **WB1544**



Candlebra
3 Light 28cm **WE1994**

STAINLESS STEEL

Simple and robust, yet looks good and has the perfect complementary accessories for your table settings.



Salt & Pepper Mill Acrylic S/S Top
Salt..... **WA4051**
Pepper..... **WA4053**



Salt & Pepper Mill Acrylic
Salt..... **WA4050**
Pepper..... **WA4052**



Salt & Pepper Shaker Lighthouse Glass
Salt..... **WA4060**
Pepper..... **WA4061**



Tea Pot Stainless Steel 1.5ltr..... **WJ1561**
Tea Pot Stainless Steel 1ltr..... **WJ1562**



Sundae Dish S/S 9cm..... **WD1964**



Soup Tureen/Punch Bowl S/S
3 ltr..... **WD1514**
Soup Tureen/Punch Bowl S/S Lid
3 ltr..... **WD1515**



Cloche 25cm dia..... **WJ1557**



Candelabra
3 Light 28cm..... **WE1994**



Glass 3 Tier Cake Stand..... **WH1196**



Glass 2 Tier Cake Stand
25cm/21cm..... **WH1194**



Table Number Stand
S/S 25cm / 10in..... **WD1968**
S/S 45cm / 18in..... **WD1970**
Jazz 41cm / 18in..... **WD1972**
WDT 41cm / 18in..... **WD1969**



WOODEN & WICKER

From bread baskets, to boards and trays, there's a choice of special accessories to work with and choose from.



Bread Basket Square S/S
35.5cm **WD1957**



Rattan Basket 30cm **WD1334**



Wicker Bread Basket Oblong
27cm x 40cm / 11in x 16in **WD1330**



Wicker Bread Basket Round
20cm **WD1324**
23cm **WD1326**



Butchers Block 40cm 40cm x 4cm **WD1315**



Steam Basket **WD1332**



Cheese Board **WD1311**



Cafeteria Tray 34cm x 48cm **WH1144**



Brown Plastic Tray 34cm x 48cm **WH1193**
Black Plastic Tray 34cm x 48cm **WH1192**



Plate Cover 26cm / 10in **WH1162**



HOT BEVERAGE SERVICE

Whether you're serving the 5,000 or a table of 12, there's a selection of tea and coffee pots to suit all sizes of events. Select from our stainless steel options or classic glass cafetiere. For the larger function, choose from our selection of insulated jugs and urns.



Brushed S/S Tea Pot
1ltr..... **WJ1558**



Brushed S/S Coffee Pot
1.5ltr..... **WJ1556**



Cafetière 12 Cup S/S
55oz..... **WJ1554**



S/S Coffee Pot Flip Lid
1.5ltr..... **WJ1560**



Tea Pot Stainless Steel 1.5ltr..... **WJ1561**
Tea Pot Stainless Steel 1ltr..... **WJ1562**



Cafetiere Glass
12 CUP..... **WJ1545**



Insulated Urn Plastic
16ltr / 3.5gal **WJ1522**



Coffee Urn Flamenco
22ltr / 5gal **WD1804**



Insulated Urn S/S
Tall 22ltr / 5gal..... **WJ1520**



Insulated Coffee Jug Black
118cl / 40oz..... **WJ1555**



Insulated Tea Jug White
106cl / 36oz **WJ1549**



Water Boiler
4 gallons (13Amp/3kw) **WJ1506**
6 gallons (13Amp/3kw) **WJ1508**



KITCHEN EQUIPMENT

The kitchen is the engine room of the hospitality programme where the success of your event is made. We have a vast range of all the practical items you need for managing **food production, storing crockery** and **maintaining hygiene**.

We also supply a vast amount of small and large cooking equipment pieces such as **turbo ovens, boiling rings, halogen pads** and more. To serve up, we have a selection of **server equipment** and to keep your food heated, a selection of **hot holdings cupboards** in various sizes. We can even keep your food cool and supply a mixture of upright and under counter **fridges** as well as **chest freezers**.

ELECTRIC

A selection of ovens, hot cupboards, bain marries, microwaves and hob units, you'll be cooking up a storm in the kitchen.



Oven Electric Burco
50cm x 75cm x 60cm /
19.5in x 25.5in x 23.5in **WK1111**
13Amp 3kw



Oven Electric Burco Double
50cm x 75cm x 60cm /
19.5in x 25.5in x 23.5in **WK1111-2**
13Amp 3kw per oven



Oven Electric Lincat
50cm x 75cm x 60cm / 19.5in x 25.5in x 23.5in
..... **WK1119**
13Amp 3kw



Oven Electric Blue Seal
30cm / 12in **WK1110**
13Amp 3.1kw



Large Hot Holding Cupboard
90cm x 72cm x 180cm **WJ1107**
13Amp 3.1kw



Small Hot Holding Cupboard
85cm x 79cm x 124cm **WJ1109**
13Amp 3.1kw



Hot Cupboard Electric Bain Marie Top
112cm x 67cm x 90 cm **WJ1110**
13Amp 3kw



Hot Cupboard Electric
92cm x 112cm x 67cm / 38in x 44in x 26.5in
..... **WJ1106**
10Amp 2kw



Microwave Electric
Small 1000w **WK1104**
Large 1900w **WK1104**
13Amp 3kw



Double Electric Hob Unit 240V
60cm x 35cm x 30cm **WK1710**
13Amp 3kw



Halogen Pad **WJ1346**
10Amp 2kw



Deep Tabletop Electric Fat Fryer
10pt / 6ltr **WK1302**
13Amp 3kw

SERVICE

A range of front of house serviceware from coffee machines, serverys, soup kettles and potato ovens, there's something to suit all.



Servery Table Top 2 Lamp**WJ1334**
5Amp 1kw



Servery Table Top 3 Lamp**WJ1336**
10Amp 2kw



Carvery Pad with Quartz Light
68cm x 50cm x 72cm**WJ1328**
13Amp 3kw



Panini Grill **WK1708**
13Amp 1kw



Coffee Machine.....**PKL74**
13Amp 3.1kw



Water Boiler
4 gallons (13Amp/3kw)**WJ1506**
6 gallons (13Amp/3kw)**WJ1508**



Pour & Serve Coffee Maker
20cm x 35cm x 45cm.....**WJ1542**
10Amp 2kw



Coffee Percolator
100 cup.....**WJ1536**
10Amp 2kw



Electric Soup Kettle 10ltr**WD1604**
13Amp 2kw



Electric Hand Wash Unit..... **WH1504**
13Amp 3kw



Hand Wash Unit
Teal 240V **WH1502**
13Amp 3kw



Potato Oven..... **WK1118**
100 Potato Capacity

GAS

A selection of ovens, boiling pans, griddle, chargrills and barbeques to mobile canopy units.



Combination Oven (Gas) 10 rack..... **PKL13G**



Combination Oven (Gas) 24 rack..... **PKL14G**



Mobile Canopy 225cm.....**PKL46-UK**



Six Burner Oven Range (Gas).....**PKL6**



Boiling Pan (Gas) 270ltr..... **PKL35**



Bratt Pan (Gas) 132ltr **PKL34**



Griddle (Gas) 90cm..... **PKL17**



Chargrill (Gas) 90cm.....**PKL100**



Pasta Cooker (Gas)
Twin well..... **PKL98**



Chargrill - Counter Top (Gas)..... **PKL40**



Double Basket Fryer 132ltr..... **PKL8G**



Gas Barbeque
152cm x 41cm / 60in x 16in..... **WK1916**
Gas Cylinder
19kg Propane **WGAS**

REFRIGERATION

Keep your food properly chilled. This range of equipment comes in various sizes to suit your particular needs.



Stainless Steel Fridge
14cu.ft / 56cm x 61cm x 185cm..... **WL1114**



Glass Fronted Fridge
14cu.ft / 90cm x 61cm x 185cm..... **WL1113**
10Amp 2kw



Chest Freezer
130cm x 70cm x 100cm **WL1112**
10Amp 2kw



Under Counter Glass Fridge
50cm x 55cm x 85cm..... **WL1118**



Under Counter Glass Fridge Double
100cm x 55cm x 85cm **WL1120**



Under Counter White Fridge
5cu.ft / 50cm x 55cm x 85cm **WL1116**

SERVICE

A range of event servery equipment to present your hot and cold food with maximum flexibility.



Hot Servery (Electric)
120cm..... **PKL68**



Hot Servery (Electric)
190cm..... **PKL28**



Refrigerated Servery (Electric)
120cm..... **PKL27**



Refrigerated 3 Tier Display (Electric)
180cm (w) x 70cm (d) x 171cm (h)..... **PKL70**



Money Maker Servery (Electric)
125cm x 61.5cm x 195cm..... **PKL71**



Heated Gantry Counter Top (Electric)
120cm..... **PKL87**



ACCESSORIES

From trolleys, to plate trees and utensils, a further selection of practical kitchen items.



Clearing Trolley 3 Shelf S/S..... **WH1310**



Plate Tree Holds 96 Plates..... **WH1308**



Stacking Trolley for Trays
Holds 17 Gastronome trays..... **WH1321**



Insulated Portable Container..... **WH1349**



Kitchen Spoon Solid..... **WH1121**
Kitchen Spoon Perforated **WH1122**
Fish Slice **WH1123**
Soup Ladle..... **WH1124**
Spider..... **WH1128**
Balloon Whisk..... **WH1142**



Frying Pan..... **WH1110**

WASHING

Clean up with our easy to use, plumbed in wash up stations and dishwashers.



Preparation Table 180cm..... **PKL1**



Double Bowl Sink 240cm..... **PKL33**



Water Heater Infinity (Gas) 32ltr..... **PKL65**



Rack Dishwasher 150 Basket..... **PKL23**



Hood Dishwasher 55 Basket..... **PKL20**



Rack Dishwasher 115 Basket..... **PKL22**





HOW TO ORDER

Use our **online ordering system** for **fast response times!**

In 2011, we launched our new online ordering system, enabling you to have your own unique log in details, create shopping templates and receive your quotes and orders back within minutes! The fastest response time you'll ever get!

Provided you have an account with us, we can set you up with your own unique log in details. This will recognise your account on our system applying the relevant information when you're requesting your quote or order.



- LOG INTO YOUR OWN ACCOUNT.
- SET UP YOUR OWN TEMPLATES & ORDER FOR EVERY TYPE OF EVENT YOU PUT ON.
- ADD THE ITEMS TO YOUR BASKET.
- COMPLETE YOUR DETAILS.
- ENTER YOUR DELIVERY & COLLECTION INFORMATION.
- REQUEST YOUR QUOTE OR ORDER.

You'll receive your quote/order request in the next few minutes.

Then one of our team in the office will check all the stock availability for you and add on any transport charges and send back to you confirming!

It's as easy as that!

We try to make the **order process** as **simple & easy as possible.**

You can do any of the following:

Email us on

enquiries@welldressedtables.co.uk

Fax us on

0845 634 00 01

Call us on

020 8545 60 00

Use our online ordering system at

www.welldressedtables.co.uk

We aim to email your quote or order confirmation back to you within 24 hours. Please check your paperwork, sign it and fax or email back to our office. Only at this point will your order be confirmed.

We advise that all of the equipment you hire goes through our quality control check procedure prior to delivery. If you are not totally satisfied, please contact us within 12 hours of your delivery.

We do understand that items can be broken in transit, if any of the items you receive are damaged, please contact us within 12 hours of delivery.

On delivery, our trained drivers will ask for a signature and will add a trolley and a box count to your delivery note.

On collection, all furniture, large equipment, trolleys and boxes will be counted and these items will be added to the collection note. Our driver will ask for a signature.

We pride ourselves on our count back. We aim to contact you within 2 working days of your collection to advise you of any missing equipment. We wait 48 hours for your response and after that time will send you an invoice. Please note, response times may be slightly longer during our peak periods.

We are happy to offer a credit account, subject to status and terms & conditions.

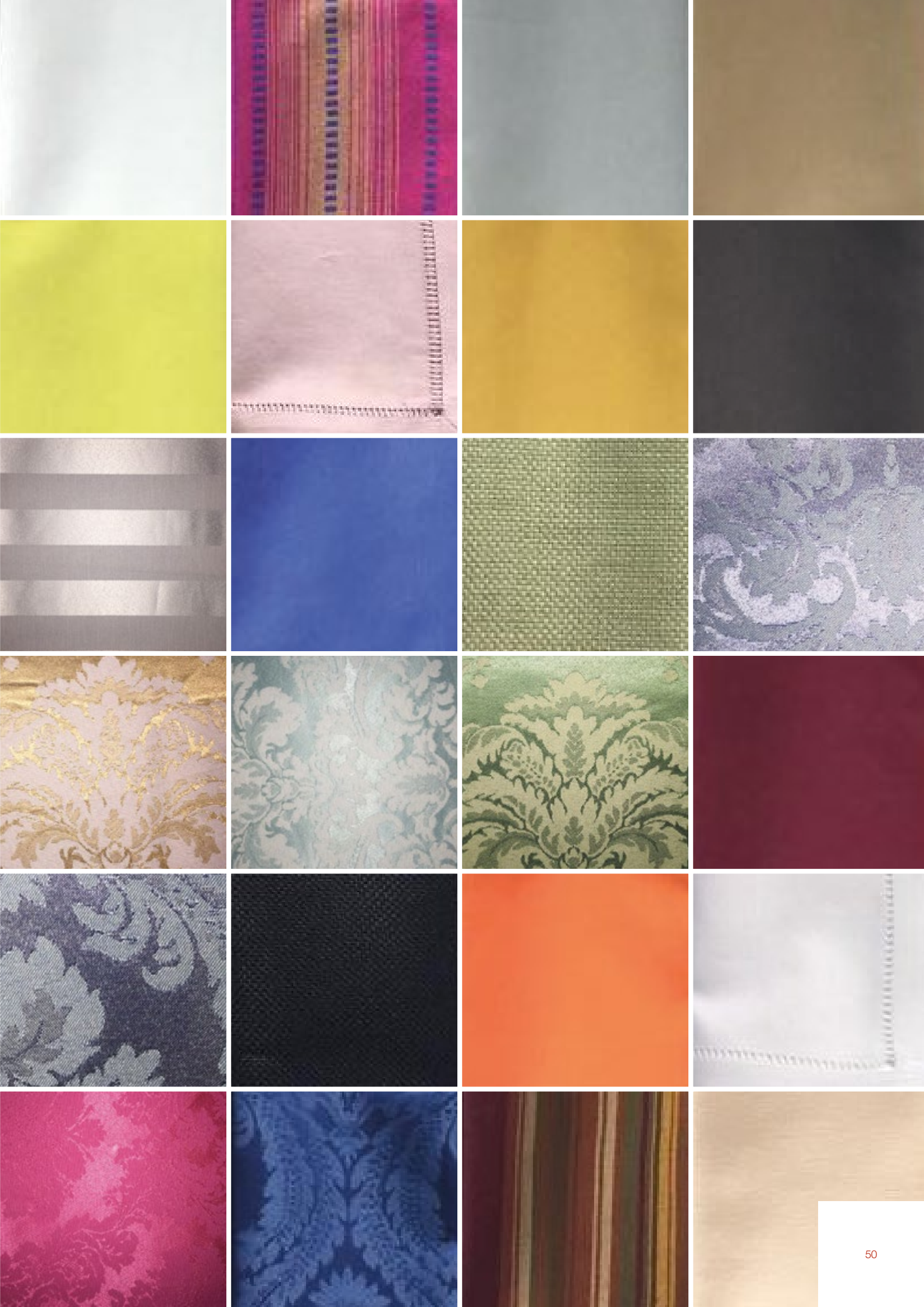
Contact the team at Well Dressed Tables on 020 8545 60 00 or email enquiries@welldressedtables.co.uk

Why not arrange to visit our Showroom in South Wimbledon – contact us by phone or email to book a time to come and have a look around. We look forward to giving you the grand tour and showing you all of our products.

TABLE LINEN SIZE GUIDE

TABLE SIZES	TABLE SIZES								
	7'	6'	5'6"	5'	4'6"	4'	3'	6' x 2'6"	6' x 2'
LINEN SIZE	LINEN SIZE								
Round 144"	To the floor	To the floor + 6" trail							
Round 132"	24" drop	To the floor	To the floor + 3" trail	To the floor + 6" trail					
Round 120"	18" drop	24" drop	27" drop	To the floor	To the floor + 3" trail				
Round 108"	12" drop	18" drop	21" drop	24" drop	27" drop	To the floor	To the floor + 6" trail		
Round 90"		9" drop	12" drop	15" drop	18" drop	21" drop	27" drop		
108" x 108"	Top cloth 9" drop	Top cloth 18" drop	Top cloth 21" drop	Top cloth 27" drop					
90" x 90"	Decorative top to edge	Decorative 9" drop	Top cloth 12" drop	Top cloth 15" drop	Top cloth 18" drop	Top cloth 21" drop	Top cloth 27" drop		
60" x 60"	Decorative top table centre diamond	Decorative top table centre diamond	Decorative top cloth	Decorative top to edge	Decorative top edge + 3" drop	Decorative top edge + 6" drop	Decorative top edge + 12" drop	Decorative top cloth	Decorative top cloth
108" x 60"								15" drop all sides	18" drop all sides
108" x 90"								Front & Back to floor	Front & Back to floor
144" x 90"								Boxed in all 4 sides	Boxed in all 4 sides
70" x 144"								Boxed in on 3 sides	Boxed in on 3 sides

For our full range of table linen visit our website at www.welldressedtables.co.uk



FAQ'S

Delivery & Collection:

Do you charge for delivery and collection?

Yes we do, but where possible we keep costs to a minimum. If you would rather collect and return hire items yourself, that's no problem. We'll be happy to help you load and unload your vehicle. Our standard delivery and collection hours are 8am – 6pm Monday to Friday. We do deliver outside of those hours and on weekends upon request.

Our charges are based on a number of factors including; postcode location, ease of access to your site or venue, dates and times and number of staff required to ensure a smooth delivery and collection service.

Do you have your own vehicles or do you deliver by courier?

We have our own vehicles and only use a courier when absolutely necessary. Please note that when having a courier service, this will be delivery to street level only.

What do you need from me to ensure a smooth delivery/collection?

We ask you to complete an access specification sheet. This asks you for information about any possible restrictions.

Please do also advise us if there is lift access, any steps to consider, narrow walkways etc. It also asks you about access to your site, any low hanging trees, parking, loading etc.

We will also need your full delivery and collection address, contact person on site for delivery and collection along with their mobile phone number in case we need to reach them.

What type of service can I expect when the delivery arrives?

Our standard delivery and collection charges are to an easily accessible ground floor entrance. Our highly trained delivery team will stack all ordered items in a mutually convenient place, check through the order with you and then ask you to sign a delivery note.

Please feel free to highlight any discrepancies at this point, so that we can deal with them quickly and efficiently.

Special boxes are provided for crockery, cutlery and glassware to ensure that you receive your items undamaged, sparkling and table ready.

What happens if there is a problem with my equipment?

We advise that all items are checked through on the day of the delivery and that you notify us within 24 hours of any discrepancies or problem so that we can help resolve as quickly as possible.

What is my responsibility for equipment return?

On collection, tables should be taken down and chairs stacked. Crockery, cutlery, glassware should be rinsed of food and placed back into their retrospective boxes. We operate a dirty collection service so you don't need to fully wash items for return. Linen should be packed back into linen hampers. All gas appliances should be disconnected and any large cooking equipment should be free from food debris. Equipment should be made ready for collection in the same place it was delivered unless otherwise pre-arranged.

Do I have to sign anymore paperwork?

Before we leave with the equipment, we ask you to sign a collection note. This means you agree that we have collected goods. It does not mean that everything has been returned. Only large items are counted out and small items are counted back in our warehouse.

What happens if I break, damage or lose equipment?

After collection, your equipment is sorted and counted back at our depot by a team of fully trained check back staff.

Any items that are found missing, broken or damaged (including weather damaged) will be charged for.

You will first receive a notification with 2 working days of items being checked back in and we give you 2 working days to come back to us with any found items. Following that an invoice will be raised. Sometimes this is slightly longer in our peak periods.

FAQ's

Let us help further by answering a few of our FAQs in advance:

What are your opening hours?

Monday to Friday 8am – 6pm.

Are there any days and times you are closed?

Our offices are closed on the weekend, Bank Holidays and in-between Christmas and New Year.

Do you have an emergency out of hours contact?

We do have an emergency contact number which can be found on your order confirmation. Please note this is for urgent enquiries only. There is always a senior member of the management team on the other end of the phone ready to help.

When is your peak period?

May, June and July, then November and December.

Can I set up an account with you?

Yes, please ask one of our team and we will send you a new account application form.

What is the cut off time for next day orders and amendments?

We try to be as flexible as possible but would like to have received all orders and next day amendments by 2pm.

Do you offer samples for tastings free of charge?

Yes we offer this service to all account customers.

Can I order online?

Yes you can, if you are an account customer, please contact us to arrange for your own unique log in details to be sent to you. If you don't have an account with us, you can still use our online ordering system.

Where do I find images and prices of your products?

All of our products along with our 1-3 day hire price can be found online on our websites.

Can I hire items for a longer period?

Yes you can. Simply provide your delivery and collection dates when contacting us and a quote will be returned to you with prices reflecting the hire period.

Are all of your electrical items tested before they are hired out?

Yes, every piece of electrical equipment is PAT tested before it goes out on hire. Items arrive with relevant paperwork confirming a test has been completed.

Where do I find all of your power requirements for each piece of electrical equipment?

Power requirements are with each product on our website. Alternatively, please contact the office and we can provide details over the phone or via email.

Are you able to provide Risk Assessments and Method Statements?

Yes, these are available on request.

Are you able to provide insurance documentation and certificates for any accreditations?

Yes, these are available on request.

What is a damage waiver?

A damage waiver acts as an insurance and covers reasonable damage to hire goods and excludes the hire of linen. This does not cover lost hire goods.

What is a refundable deposit?

You may be asked to pay a deposit when you order which is refunded within 28 days of hire goods being returned to us. Any losses or other applicable charges may be taken from this amount but you will always be notified in advance.

Do you have a showroom I can visit?

Yes, we have a showroom in South Wimbledon. Please email enquiries@welldressedtables.co.uk to arrange a suitable date and time to visit.

How do I make a complaint?

Please put your complaint in writing to enquiries@welldressedtables.co.uk and we will endeavour to respond to you as quickly as possible.

Do you have any terms and conditions of hire?

Yes and these are available on request and are sent out with every quotation and order confirmation.

We hope we have answered all of your questions, but if you would like any further help or information, please contact us on **020 8545 6000** or email enquiries@welldressedtables.co.uk